

ISSUE 26.3

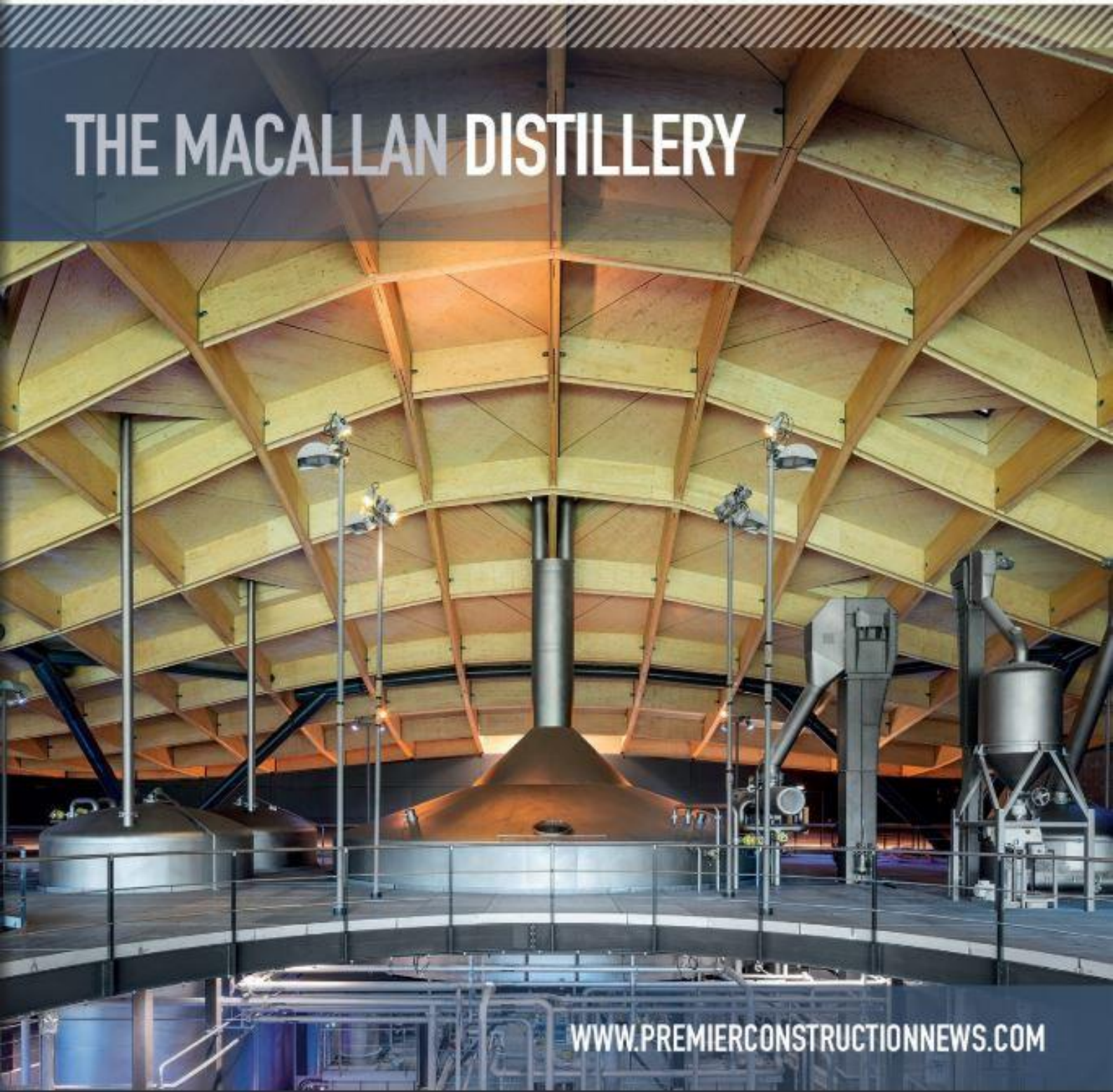
IN PRINT • ONLINE • TABLET



PREMIER CONSTRUCTION

NOVEMBER 2018

THE MACALLAN DISTILLERY



WWW.PREMIERCONSTRUCTIONNEWS.COM





Charles Hosco

TINTAGEL HOUSE

TINTAGEL HOUSE IS THE NEW FLAGSHIP WORKSPACE FOR THE OFFICE GROUP (TOG) FOLLOWING A MAJOR REFURBISHMENT BY ARCHITECTS STANTON WILLIAMS AND INTERIOR BY UNIVERSAL DESIGN STUDIO.



*WE ARE DELIGHTED TO BRING ENERGY AND RELEVANCE
ONCE AGAIN TO THIS SOUTH LONDON LANDMARK THROUGH OUR
IMAGINATIVE RENOVATION AND RESTORATION OF THE INTERIOR.*



Located on Albert Embankment in Vauxhall, Tintagel House was built in 1960 and was originally occupied by the Metropolitan Police for half a century. The recent makeover has transformed the building into a new flexible workspace hub. It will also help generate further diversity in the area and contribute to the energy and activity of the revived Nine Elms district.

Stanton Williams has transformed the existing 12-storey building into a flexible office setting, designed to cater for a variety of work styles. Taking a sustainable approach, the project has expanded and improved the existing office accommodation with the creation of spacious communal areas in the new extension at ground and first floor levels,

in addition to the conversion of the panoramic top floor.

The expansion of the ground and first floors has activated the building's frontage, engaging both visually and physically with the public space around the building to create a welcoming and open entrance. This new extension allows for generous communal spaces where the building's occupants can meet, share facilities and interact with the wider community, a fundamental aspect in TOG's approach to the provision of flexible work space. The larger floor plates are better suited to open-plan, flexible office layouts and can be easily accommodated or reconfigured over time, future-proofing the building.

Alan Stanton, Director at Stanton Williams, said:

"We have been pleased to work with TOG on this project to give an unloved 1960s building a new lease of life, creating spaces that support new ways of working for entrepreneurs and businesses. The project also makes a generous contribution to the local community via an improved public realm and new riverside garden."

The interior design at Tintagel House has been overseen by Universal Design Studio. Inspired by the building's rich heritage as a home for the Met Police, the new interiors aesthetically reference archival material from the building in the 1960s, juxtaposed with the new uses of the building.

The former home of the first police computer – an ICT 1201 mainframe installed in the 1960s – the design for key new spaces within Tintagel House »



reference these state-of-the-art data processing technologies of the era with a strong graphic quality using materials such as brushed stainless steel, terrazzo and block colours, contrasted against contemporary fittings.

Universal has created a broad menu of interiors, which vary in degrees of privacy and openness, designed to accommodate and nurture the creative culture both of TOG's nomadic 17,000 strong modern working community and guests from the surrounding Vauxhall area.

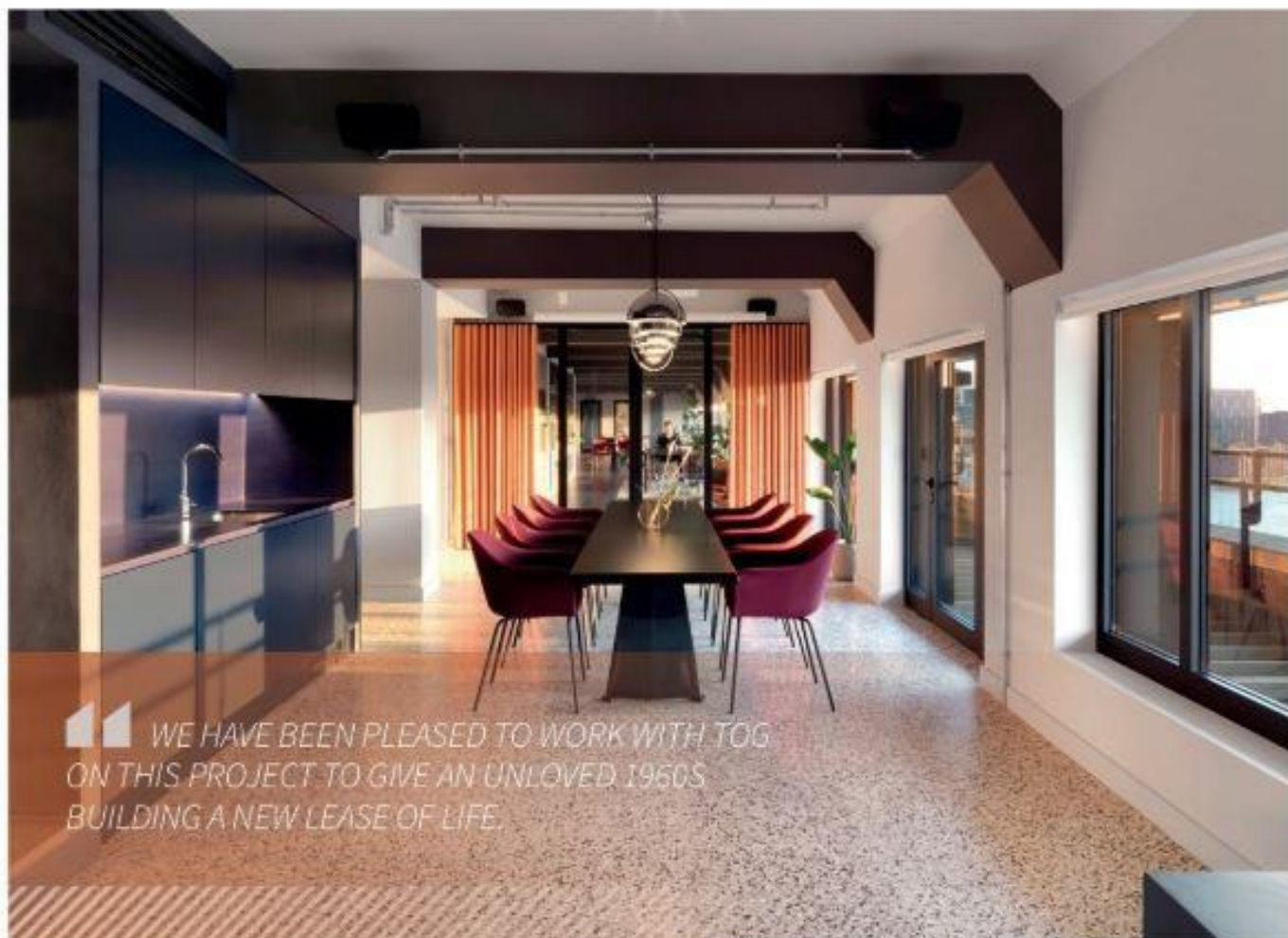
In addition, to a members' bar, café, gym, workshop space, a central 'forum' for events and executive suite on the top floor, Universal has also designed a Secret Room within Tintagel House, a speakeasy-style member's only space concealed behind a cleaner's cupboard door entrance.

Jason Holley, Universal Design Studio Director, said:

"Tintagel House is a genuinely optimistic and engaging addition to the wider Nine Elms development. We are delighted to bring energy and relevance once again to

this South London Landmark through our imaginative renovation and restoration of the interior. Working with the grain of the existing building and drawing on our knowledge of the local history we have created a diverse set of spaces, designed to nurture and creative culture that feel both sympathetic, yet thoroughly modern and innovative."

The site around the building has been transformed with new landscaping by Bradley-Hole Schoenaich Landscape. ■



WE HAVE BEEN PLEASED TO WORK WITH TGS ON THIS PROJECT TO GIVE AN UNLOVED 1950S BUILDING A NEW LEASE OF LIFE.



INOPERA GROUP

THE BUILDING CENTRE, STORE STREET, LONDON WC1E 7BT
 TEL 0203 3157 1086 • EMAIL MAE@INOPERAGROUP.COM
 WWW.INOPERAGROUP.COM

SPECIALISTS IN STONE & PORCELAIN INTERIOR FINISHES



Lease a Leaf

Interior plant specialists, design, installation and maintenance

www.lease-a-leaf.co.uk t: 0800854291